

50 NEW FAMILIES FALL INTO HOMELESSNESS EACH WEEK



The most frequently seen age of a client is three.

For over 30 years, Save the Family has helped to create **STABLE HOMES, SAFE CHILDREN, AND STRONG FAMILIES**



save the family
FOUNDATION OF ARIZONA

Housing

Save the Family offers four housing programs to meet the unique needs of each family we serve. Rapid Rehousing, Transitional, Step Up to Independence, and Supportive Services for Veteran Families make up our four distinct housing programs.



Case Management

Save the Family Case Coordinators utilize best practice methods including Critical Time Intervention, Progressive Engagement, Trauma Informed Care, and Motivational Interviewing to maximize the chance of long term success for each family.



Adult Services

Save the Family provides Career Development Services, Parent Support Services, Financial Literacy and Budgeting Classes, and a host of other programs to meet the needs of parents in our programs.



Children's Services

Save the Family offers on-site drop in daycare for clients, after school and summer programs, and support for extracurricular activities and summer camps for the more than 1,200 youth we serve each year.

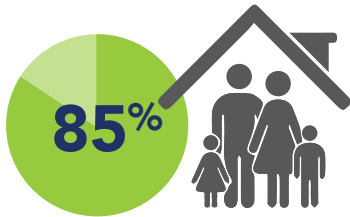




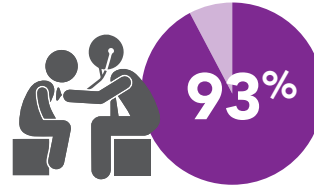
save the family
FOUNDATION OF ARIZONA

Save the Family equips to families to address poverty, overcome homelessness and achieve self-sufficiency. Together, we are working toward our vision of ensuring **stable homes**, **safe children** and **strong families**.

PARENT SUCCESSES

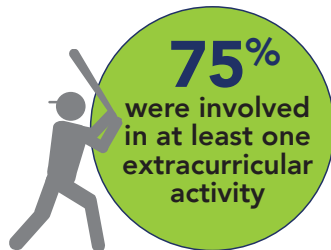
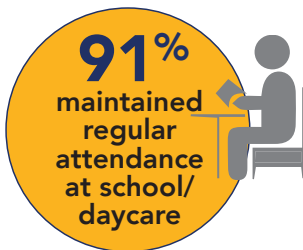


Obtained permanent housing



Obtained and regularly accessed health care for their families

CHILDREN'S SUCCESSES



OUR FAMILIES



GET INVOLVED

30 YEARS
servicing families

DONATE

Support our 30th anniversary by becoming a monthly donor! Your ongoing commitment strengthens Save the Family's ability to provide housing and supportive services for homeless families.



VOLUNTEER

Give the gift of time by utilizing your unique skills and passions. Check our website for volunteer opportunities.

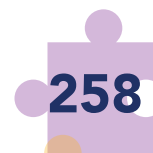
LEAVE A LEGACY

Consider adding Save the Family to your estate plan to leave a lasting legacy for families in need. Visit our website to learn more.

CONNECT



COMMUNITY OUTREACH



Back-to-School Bash (school supplies) for K-12 students



Community sponsors



Thanksgiving baskets for families



Adopt-A-Family holiday gifts for families

Visit our website at www.savethefamily.org