

THE MOST FREQUENTLY SEEN AGE OF A CLIENT IS THREE.



Save the Family will serve 630+ families this year

For over 30 years, Save the Family has helped to create **STABLE HOMES, SAFE CHILDREN, AND STRONG FAMILIES**



save the family
FOUNDATION OF ARIZONA

Housing

Save the Family offers three housing programs to meet the unique needs of each family we serve. Rapid Rehousing, Transitional, and Step Up to Independence make up our distinct housing programs.



Case Management

Save the Family utilizes best practices including Critical Time Intervention, Progressive Engagement, Trauma Informed Care, and Motivational Interviewing to maximize the chance of long term success for each family.



Supportive Services

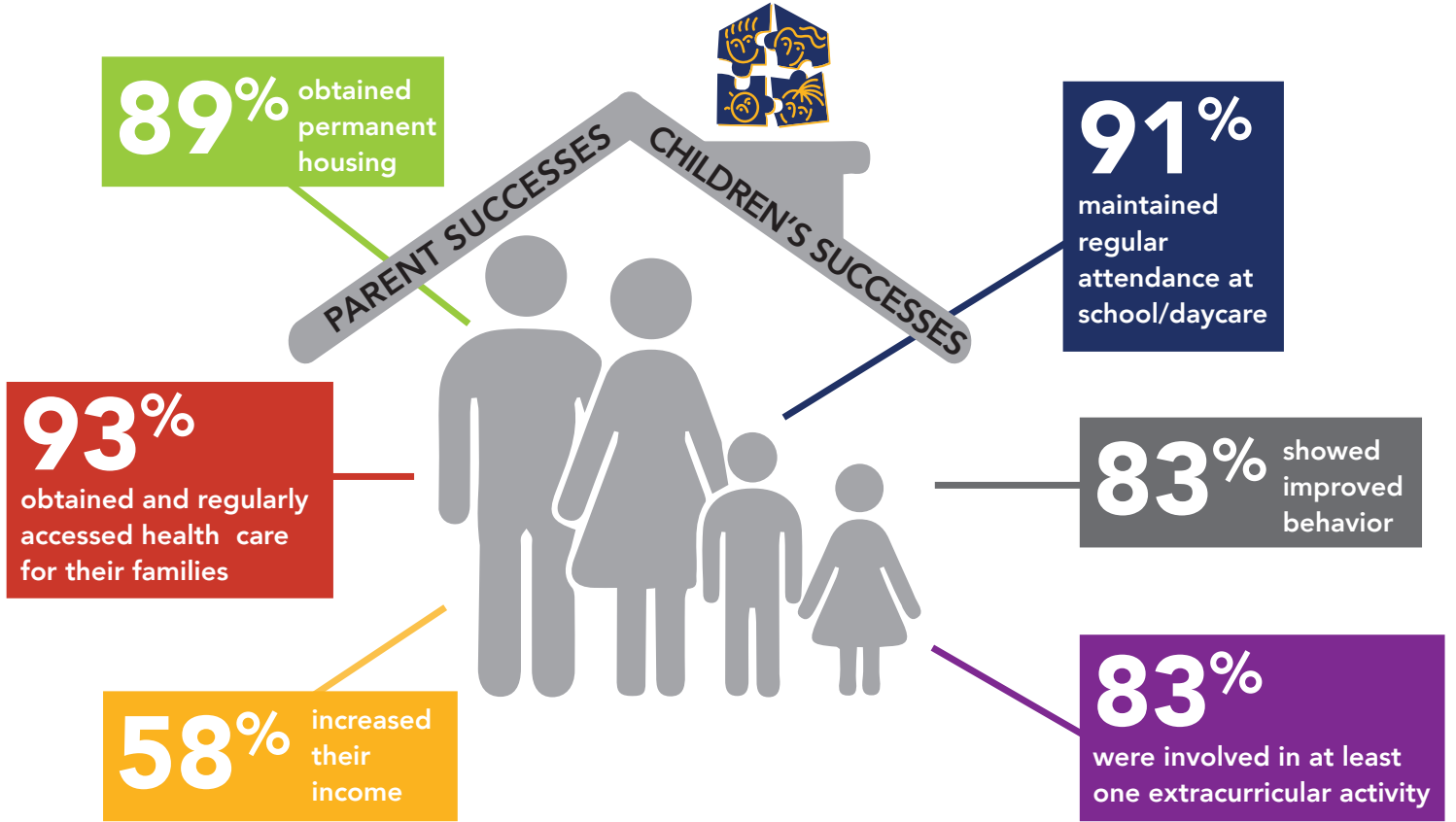
Save the Family provides career development services, mental health and substance abuse support, financial literacy and budgeting classes, and other programs to meet the needs of parents in our programs.



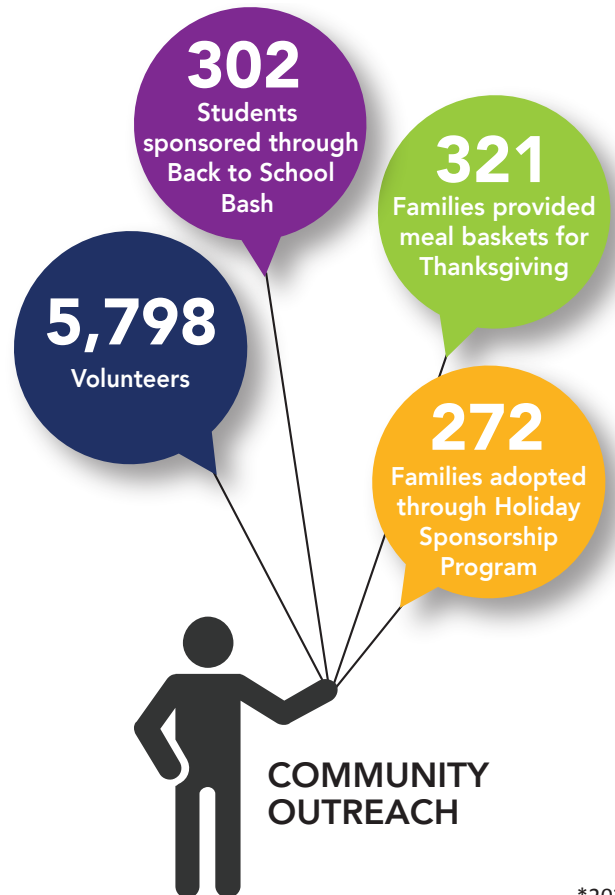
Children's Programs

Save the Family offers an on-site drop in children's center for clients, after school and summer programs, and support for extracurricular activities and summer camps for the more than 1,000 youth we serve each year.





OUR FAMILIES



125 E. University Dr., Mesa, AZ 85201
480.898.0228 ph | 480.898.9007 fax

Reasonable accommodations available upon request.



*2020 Data