



We're Actively Addressing Family Homelessness with a

Holistic Approach

in Maricopa County

2025 IMPACT REPORT



The Affordable Rental Movement (ARM) of Save the Family

ARM directly contributes to the availability of permanent low-income housing through more than **170 scattered single-family homes**.

ARM is also a co-developer for three affordable multi-family communities, each designed to serve specific underserved populations. The **Escobedo at Verde Vista** in Mesa provides affordable housing for families and individuals, with a focus on those experiencing behavioral and mental health challenges. **Valor on Eight**, located in Tempe, is dedicated to supporting low-income female veterans and their families. The upcoming **Phoenix Scholar House** in Phoenix, will aim to reduce barriers to post-secondary education by providing affordable housing along with academic and family support services for low-income single parents with children.

Each complex includes a Save the Family Resource Center, where a case manager provides workforce development workshops and access to community resources.



Community Partnership Highlight

Save the Family partners with more than 100 other local non-profits and local businesses to ensure families and children have access to resources needed to achieve success.



Our mission at **Save the Family Foundation of Arizona** is to equip families to address poverty, overcome homelessness, and achieve self-sufficiency.

We envision communities free from family homelessness, where every person has a **safe, affordable place to call home.**



www.SaveTheFamily.org

125 E. University Dr., Mesa, AZ 85201 | p: 480.898.0228 | f: 480.898.9007
Tax ID: 86-0665712 | QCO Code: 20320



Reasonable accommodations available upon request.
TTY Services: 1.800.367.8939

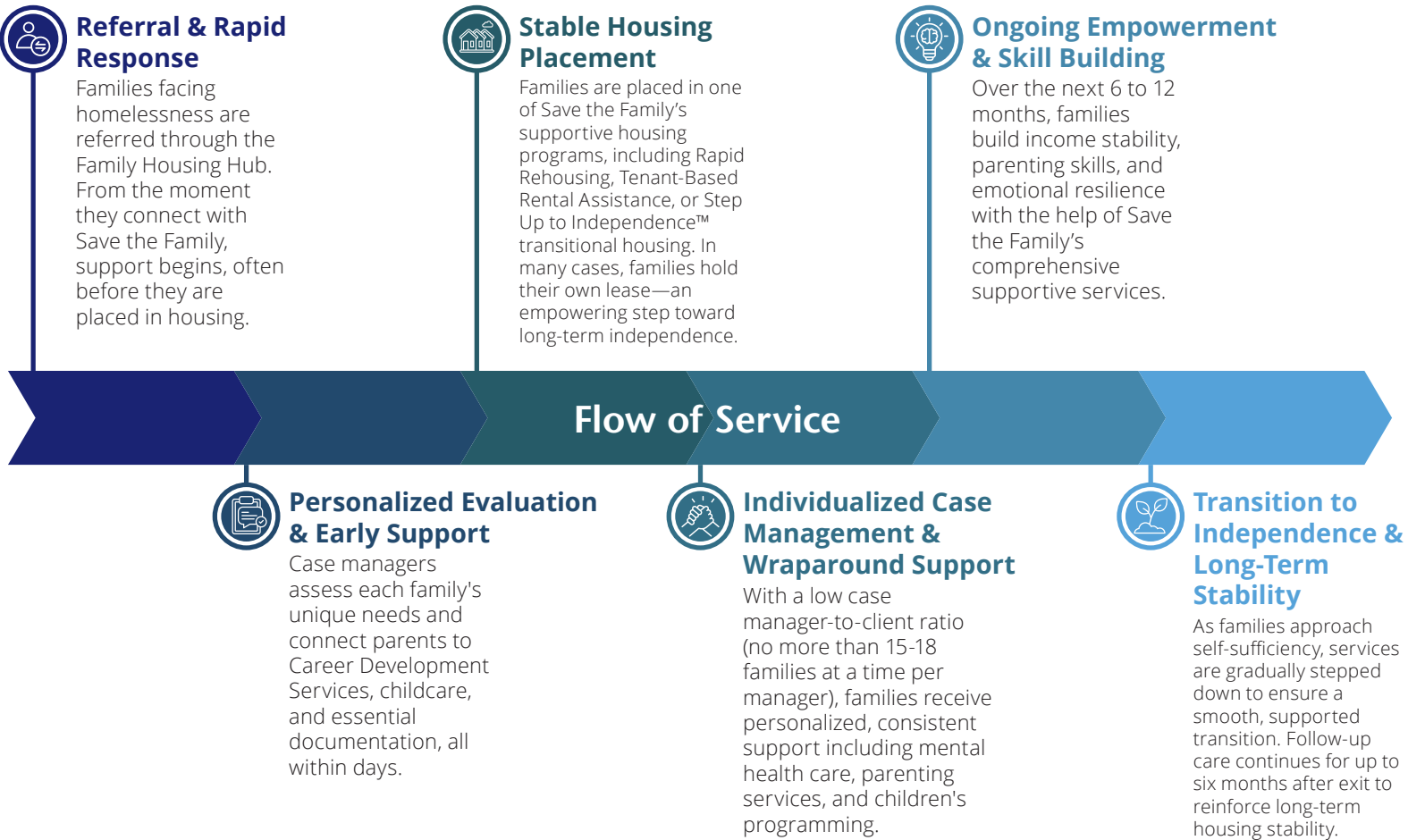
STABLE HOMES. SAFE CHILDREN. STRONG FAMILIES.

The Path to Family Stability

We know that housing alone is often not enough to ensure family stability over the long term.

Save the Family takes a holistic and multi-generational approach to family homelessness. Our comprehensive model provides safe housing, individualized case management, and wraparound support services tailored to each family's needs. This journey equips families with the stability, skills, and support they need to achieve lasting independence.

A Journey of Hope and Lasting Change



Families benefit from a range of supportive programs that enhance and reinforce their journey to independence.

Supportive Services:

- Career Development Services
- Mental Health Substance Abuse Support Services
- Trauma Therapy
- Parent Support Services
- Children's Services

Housing Programs:

- Rapid Rehousing
- Tenant Based Rental Assistance
- Step Up to Independence™ transitional housing
- Affordable Permanent Housing



780+ Families Served

2,287 Individuals Served

By addressing housing, financial independence, mental health, and child development through a unified, evidence-based approach, Save the Family equips families not only to secure stable housing but also to build the skills, access resources, and receive ongoing support needed to break the cycle of poverty and homelessness and achieve long-term stability.

FROM SURVIVING TO THRIVING

Jolienne's Story



Safety, Stability, and New Beginnings

Before coming to Save the Family, life was a daily struggle just to survive. After escaping domestic violence, Jolienne, her mother, and her two younger brothers found themselves homeless and unsure of what the future held. Without a support system, they faced each day with uncertainty and fear.

Save the Family became their lifeline, offering a fresh start with stable housing, personalized support, and access to vital resources. Jolienne's mother embraced every opportunity, workshops, career services, and parenting support that the program provided. Her strength and determination became a beacon of hope that helped the entire family heal and rebuild their lives.

Thanks to the support of community partners, Jolienne's younger brothers were able to stay in their school district, giving them a sense of normalcy and stability during a difficult time. Inspired by her mother's resilience, Jolienne worked hard in school and in life. Today, she is a nurse pursuing her master's degree while launching her own business, and her mother has proudly become a homeowner.

Save the Family didn't just change their circumstances; it transformed their future. What once felt like a struggle to survive has blossomed into a story of thriving, hope, and new beginnings.

JULY 2024 - JUNE 2025

Save the Family Impact

